



Illicit Drug – Crime Nexus (?)

Comparing Population-Level Trends

Brad A. Myrstol

Director

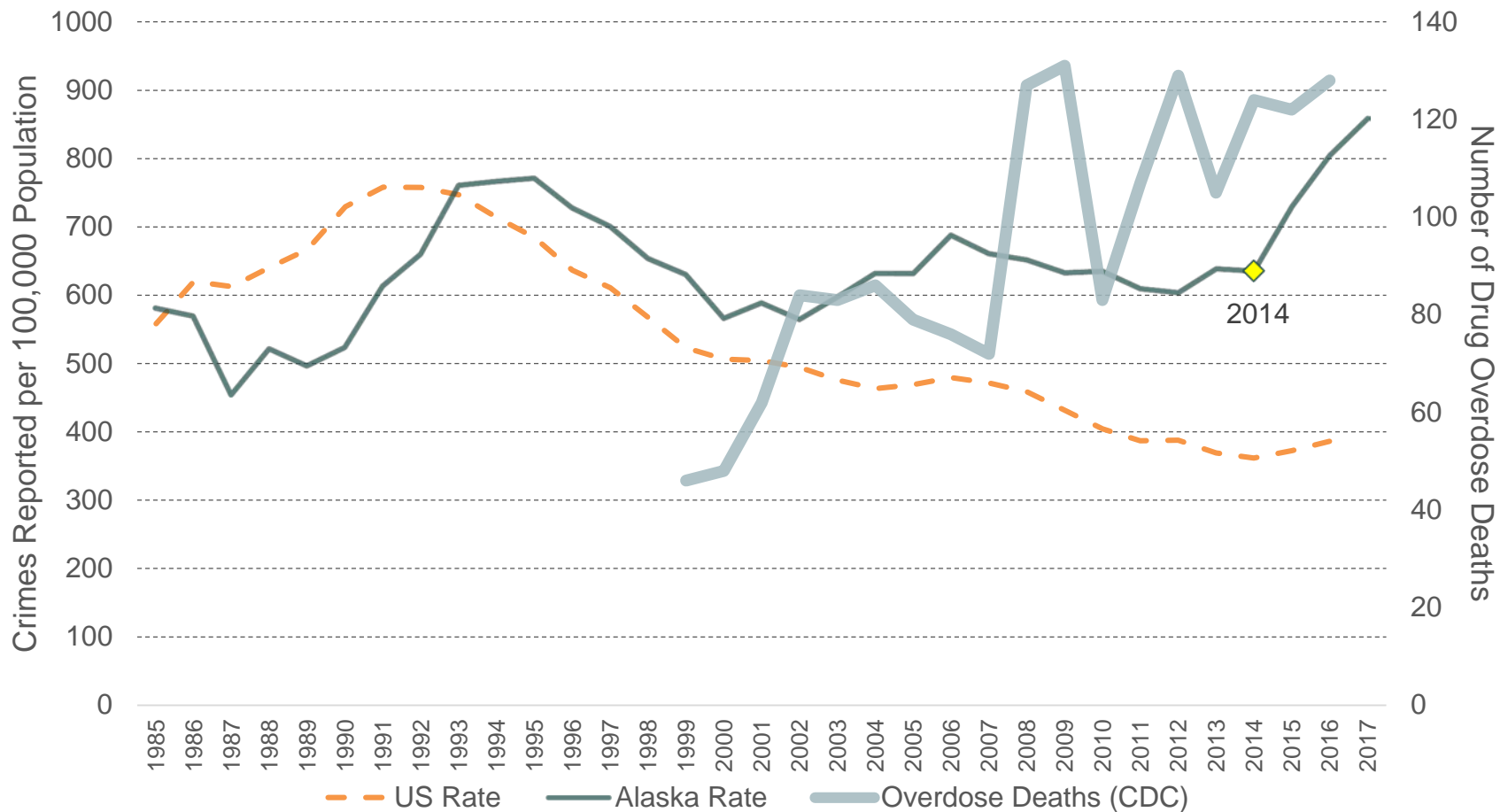
UAA Justice Center

Alaska Justice Information Center

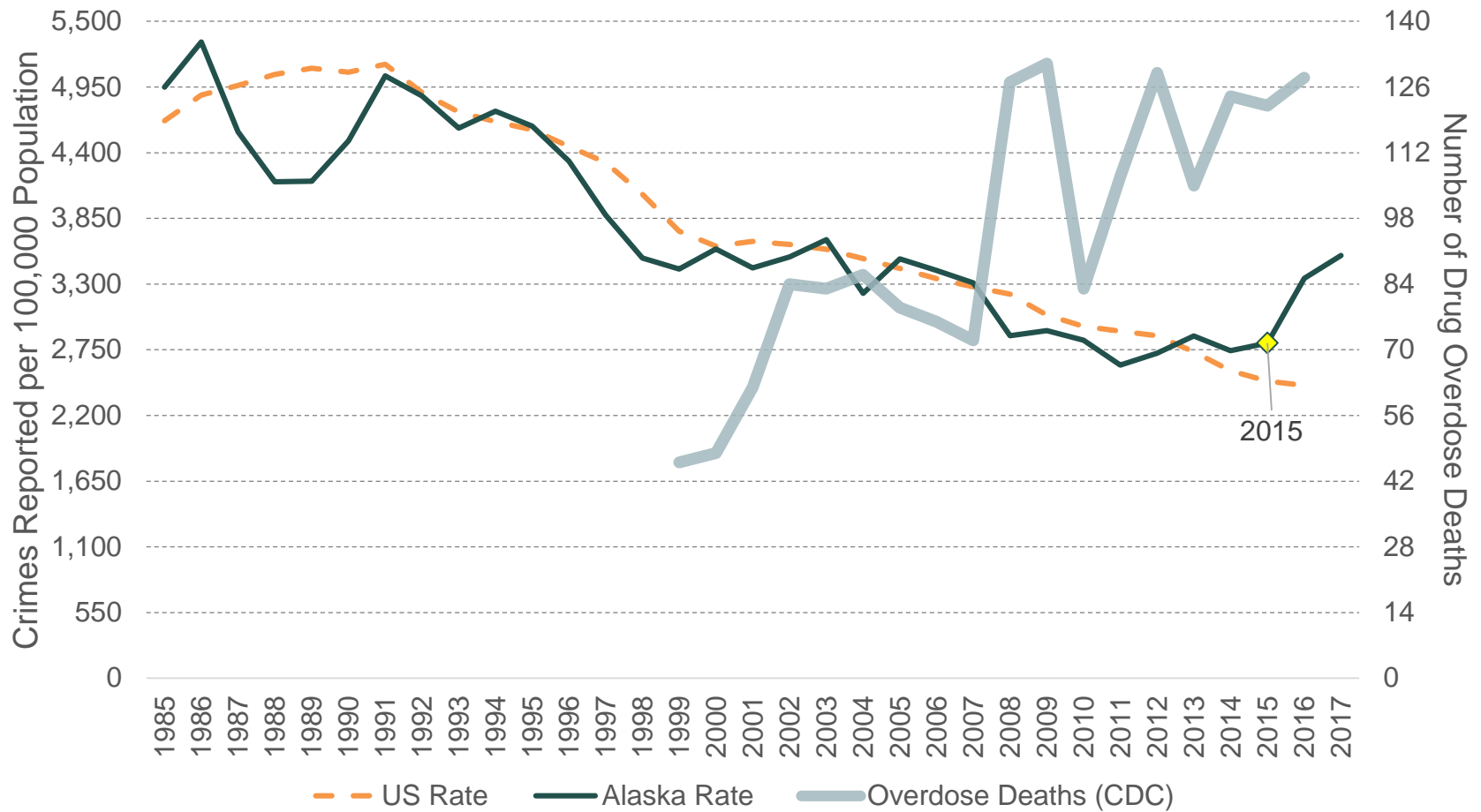
September 11, 2018

CRIMES REPORTED TO POLICE

Violent Crime Rates: 1985-2017



Property Crime Rates: 1985-2017



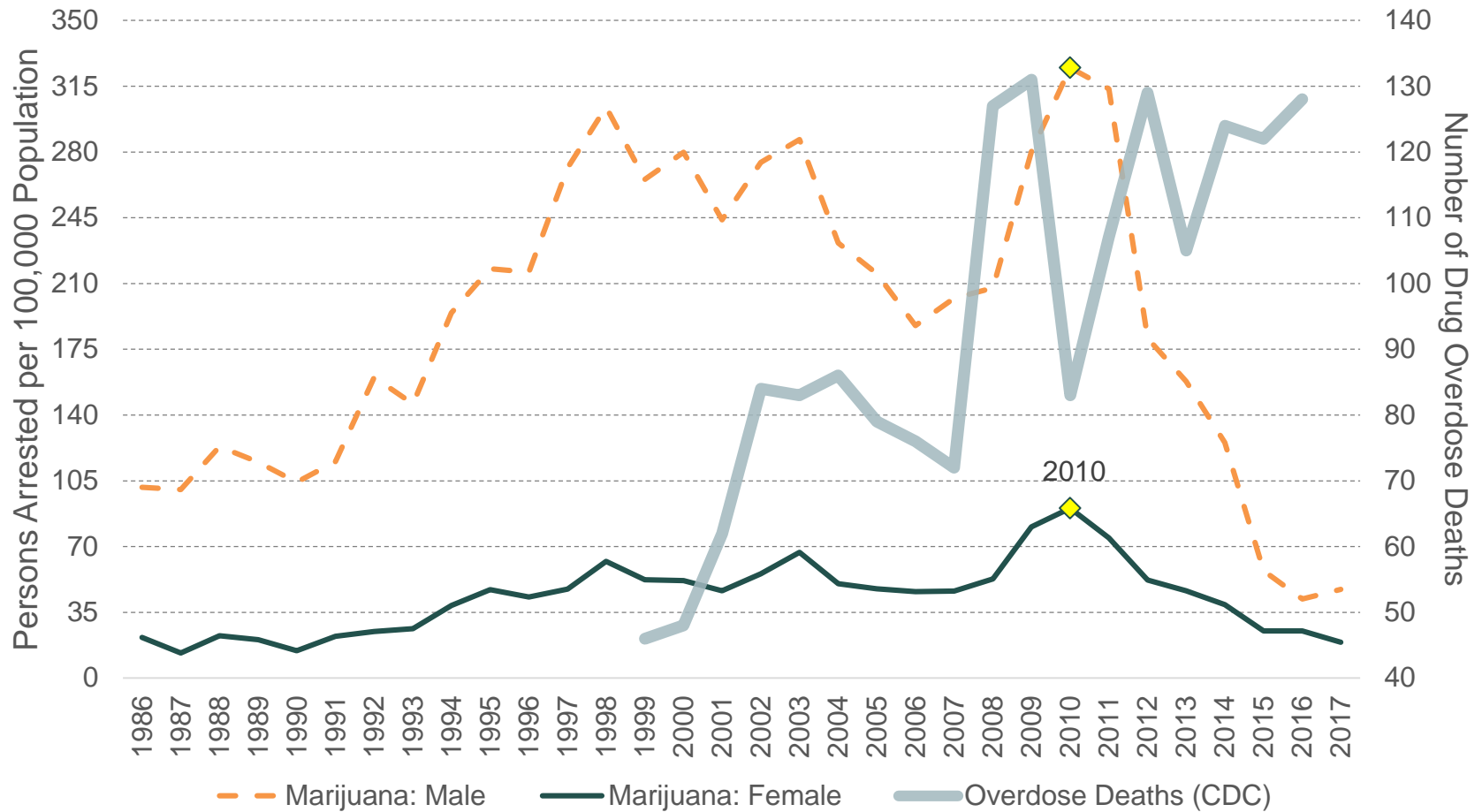
From Crime to Criminal Justice System Impacts

ARRESTS FOR DRUG OFFENSES



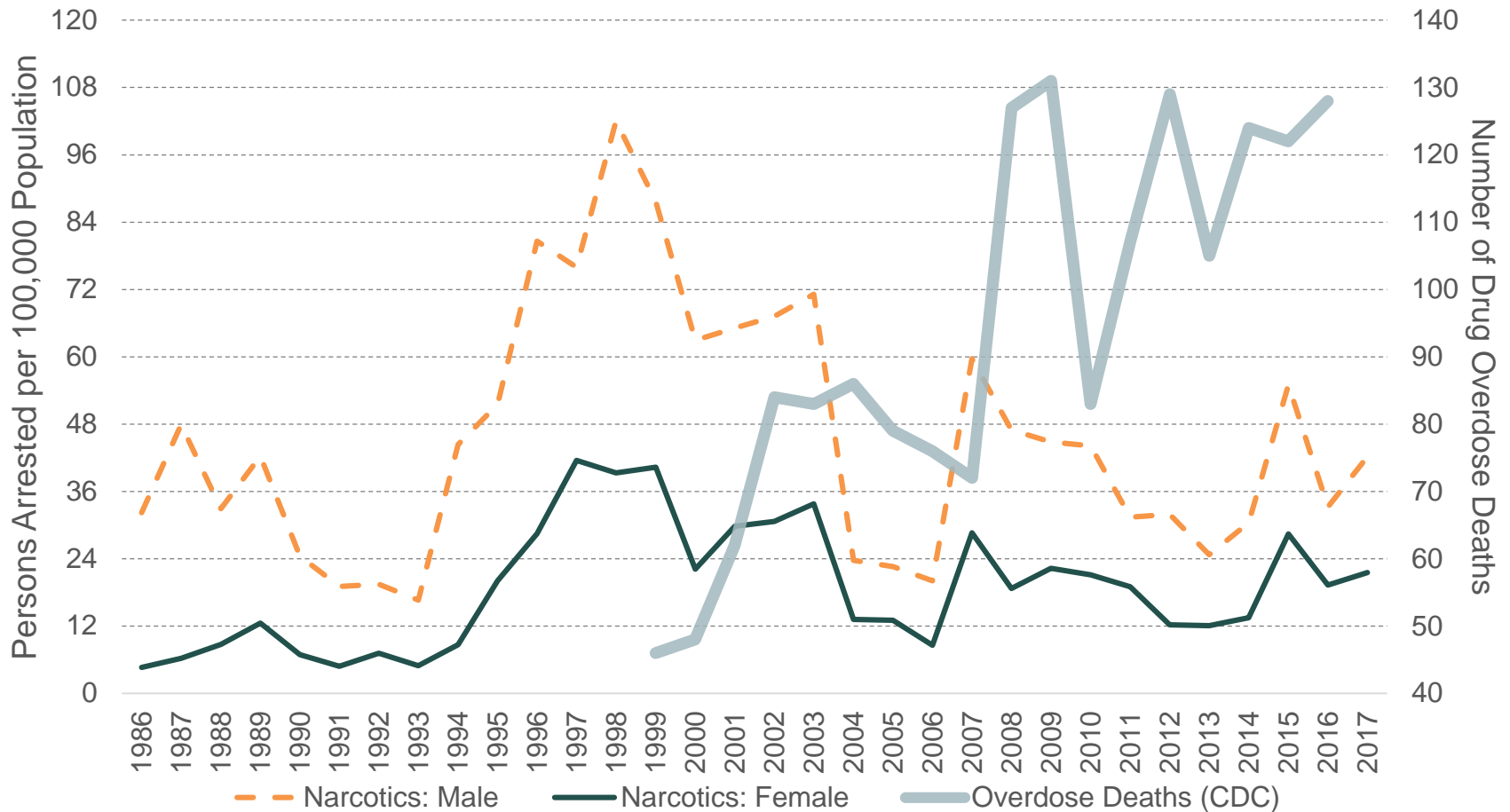
Marijuana Arrest Rates

Possession



Narcotic* Arrest Rates

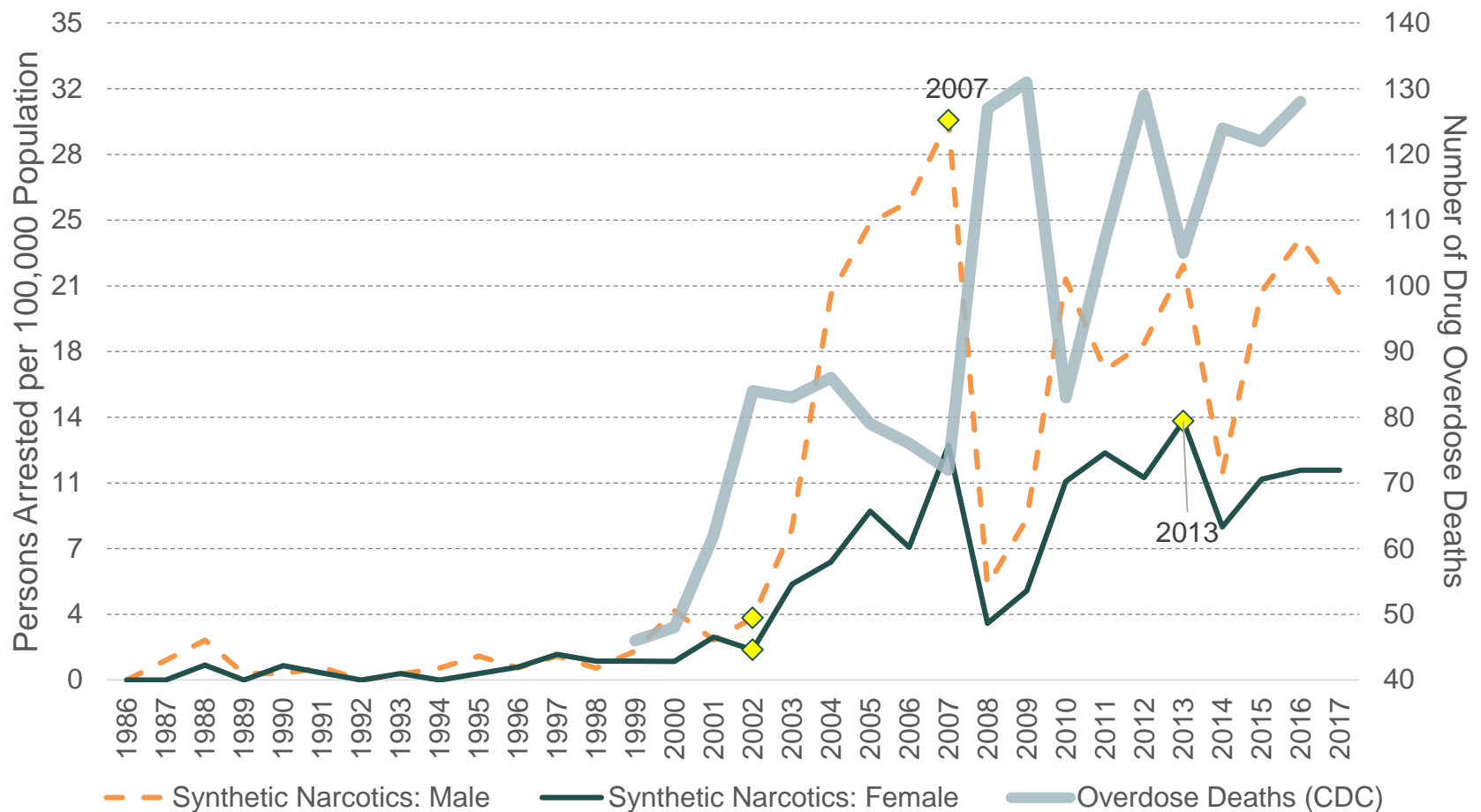
Possession



*UCR definition includes: cocaine, opium, heroin, morphine

Synthetic Narcotic* Arrest Rates

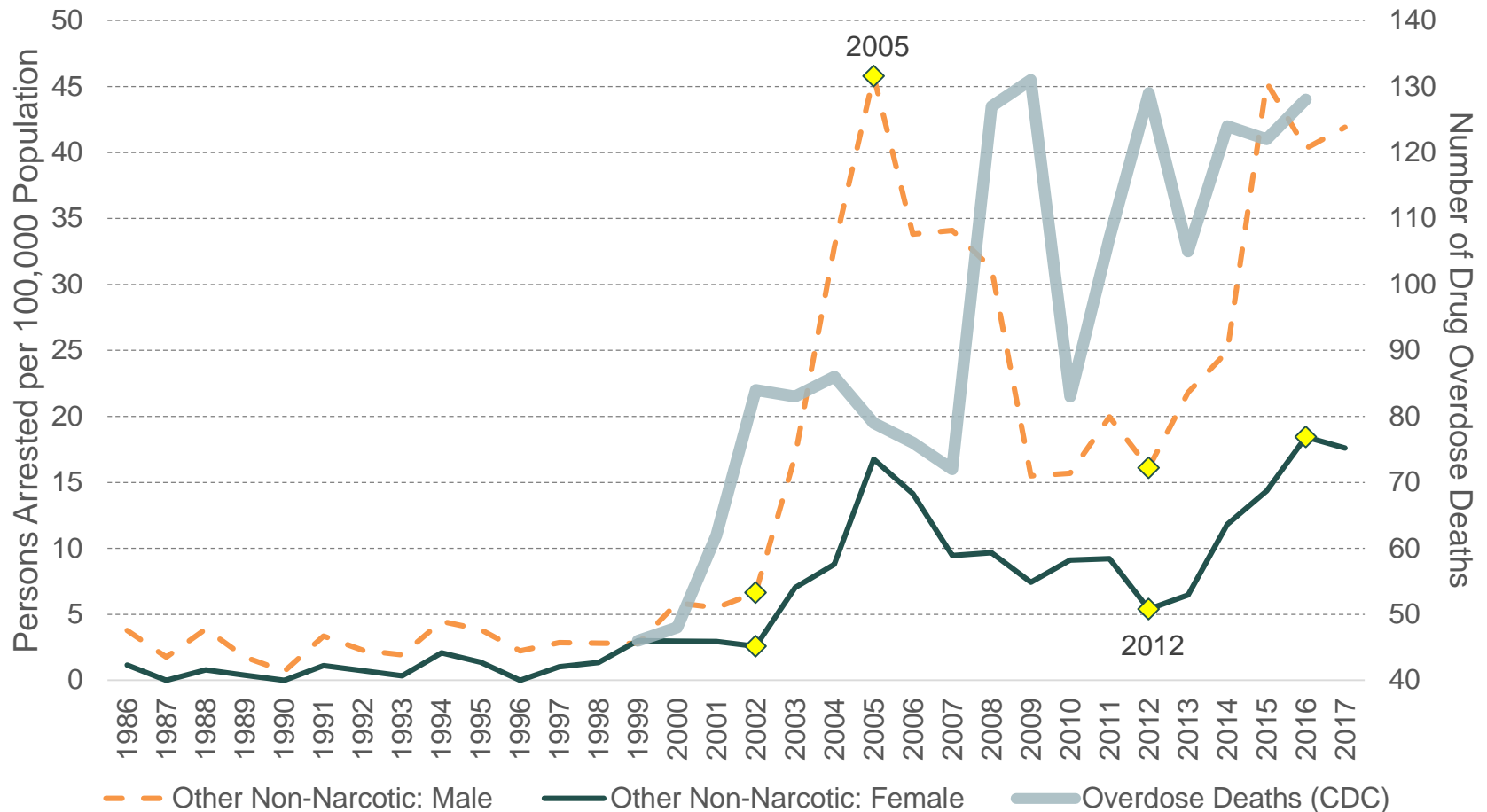
Possession



*UCR definition includes: fentanyl, demerol, hydrocodone, oxycodone, methadone, dilaudid, buprenorphine

Other Non-Narcotic* Arrest Rates

Possession



*UCR definition includes: amphetamine, methamphetamine, phencyclidine (PCP), naloxone, ketamine, MDMA, MDPK, barbiturates

Getting From Description to Explanation

- Are recent increases in Alaska crime rates directly linked to trends in illicit drug use (esp. opioids and methamphetamine)?
 - Perhaps. Certainly a reasonable hypothesis.
 - Need to articulate what those linkages might be.
 - Unfortunately, we do not have good data to begin “unpacking” the drug-crime nexus.
 - Not really a technical challenge, but a political and financial one.
 - Example: Arrestee Drug Abuse Monitoring (ADAM) program.
 - **Data-driven decision making** is important for improving public safety.
 - We are currently experiencing an “information deficit” when it comes to the relationship between the two phenomena.
- What is AJiC’s role?
 - Collect, compile, analyze data that supports prevention and intervention efforts

Citations and Resources

- Alaska crimes reported to police and arrest data obtained from the Alaska Department of Public Safety:
 - <https://dps.alaska.gov/Statewide/R-I/UCR>
- Alaska population data obtained from the Alaska Department of Labor and Workforce Development:
 - <http://live.laborstats.alaska.gov/pop/index.cfm>
- Alaska drug overdose mortality data obtained from the Centers for Disease Control
 - <https://wonder.cdc.gov/>
 - Centers for Disease Control and Prevention, National Center for Health Statistics. Underlying Cause of Death 1999-2016 on CDC WONDER Online Database, released December, 2017. Data are from the Multiple Cause of Death Files, 1999-2016, as compiled from data provided by the 57 vital statistics jurisdictions through the Vital Statistics Cooperative Program. Accessed at <http://wonder.cdc.gov/ucd-icd10.html>